

Chapter 19 LAN Solution for LED Display Screen

1. Introduction

There are usually two solutions:

Solution 1: LED screens and PC are in one LAN, as shown in image 22-1 in below:

Solution 2: LED screens and PC in different LANs, as shown in image 22-2 in below:

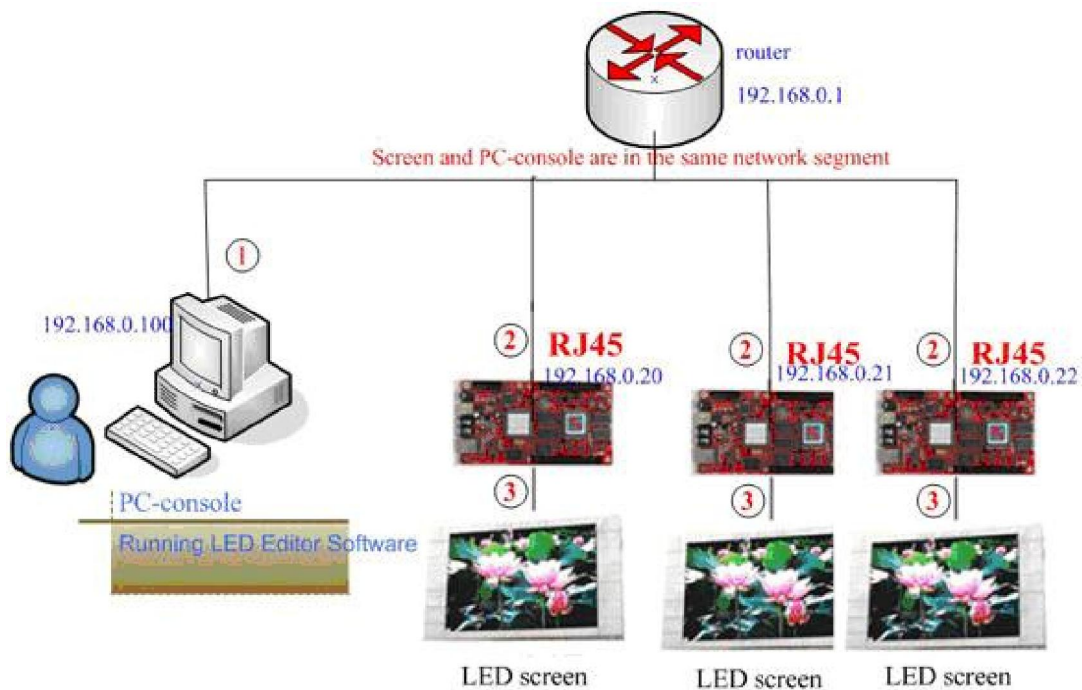


Figure 22-1

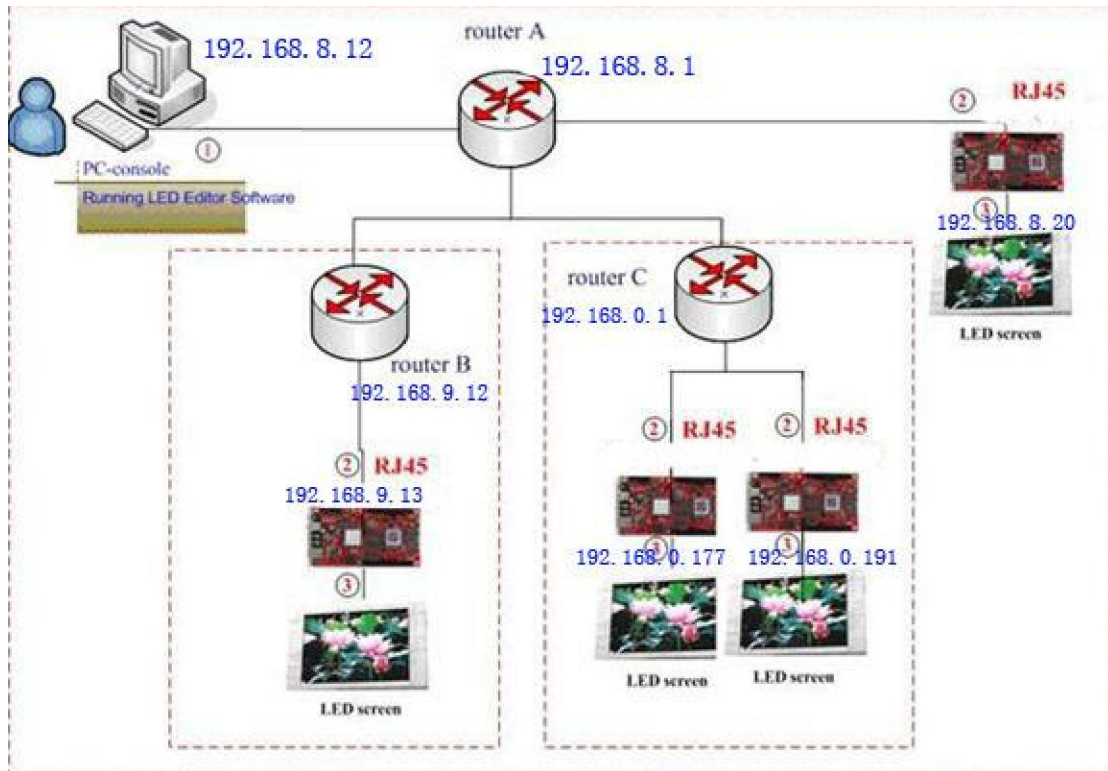


Figure 22-2

- A. Connecting PC with ADSL router by cable
- B. Connecting control card with ADSL router by cable
- C. Connecting control card with led screen by HUB and flat cables.

2. Solution 1: introduction of Led Editor Software

Here we have two led signs so we need to do following things:

Click on “Options”à Software setupà led sign window, as shown in image 22-3 in below:

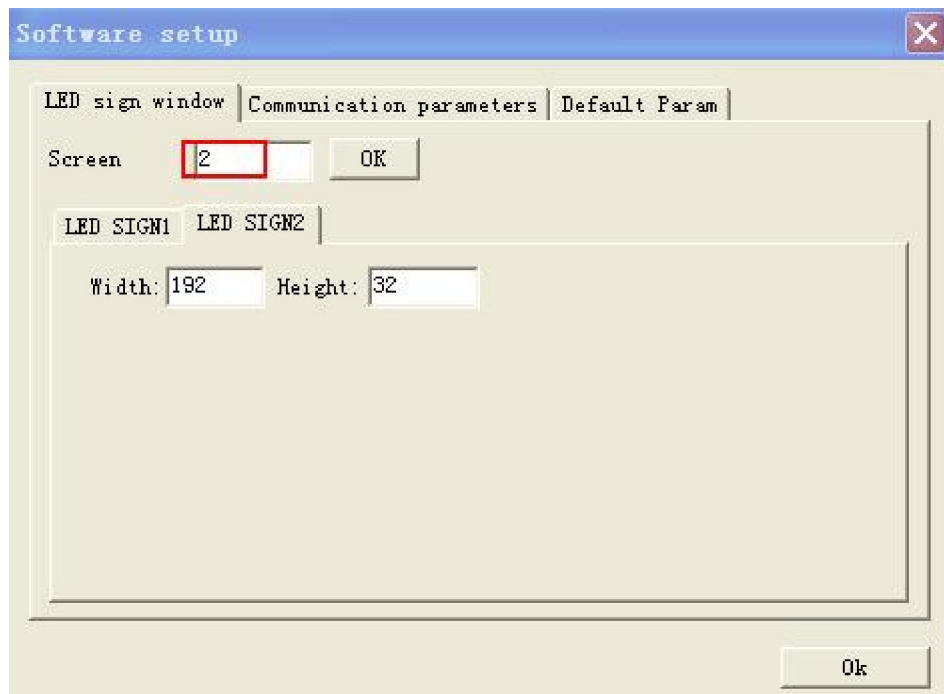


Image 22-3

Click on “Options”à Software Setupà Communication parametersà Multi-modeà Auto search LED screen, as shown in image 22-4 in below:

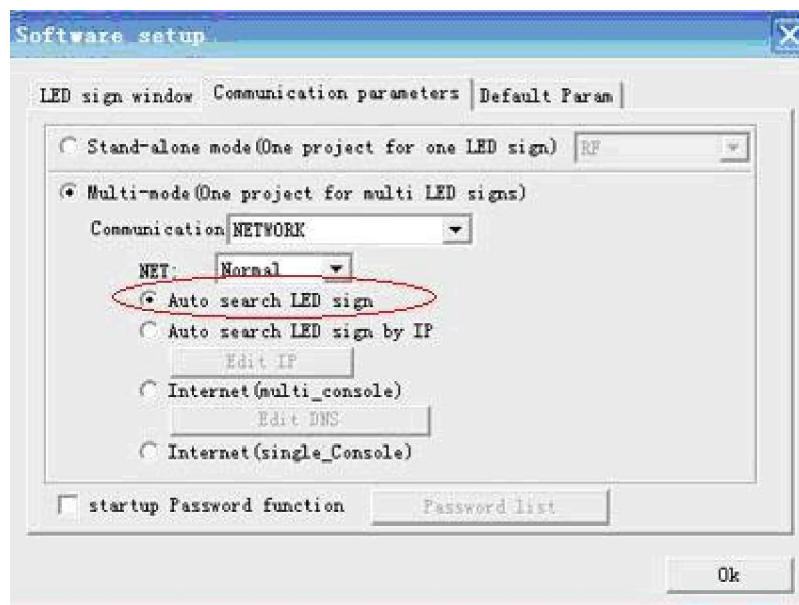


Figure 22-4

In solution 1, Led Editor Software can auto search control card on-line; please click “Control” on menuà select “Get Led sign status” then a communication window will pop up or users can click on “Send” button on menu then you can operate on-line screen in this LAN, as shown in image 22-4 in below:

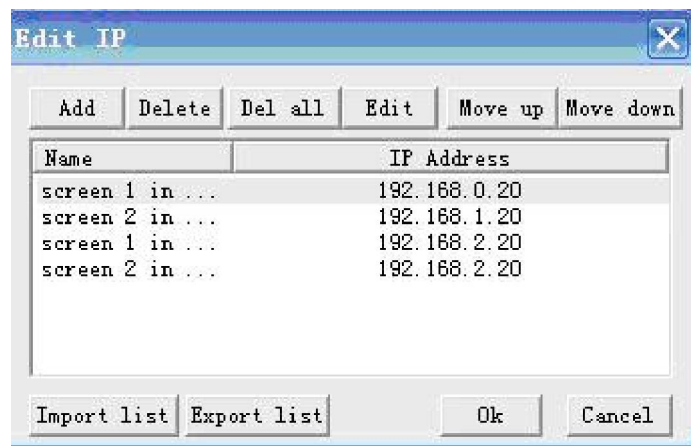


Figure 22-6

Please click “Control”à click on “Get Led sign status” then a communication window will pop up or users can click on “Send” button in menu then you can operate on-line screen in LAN. As shown in image 22-7 in below:

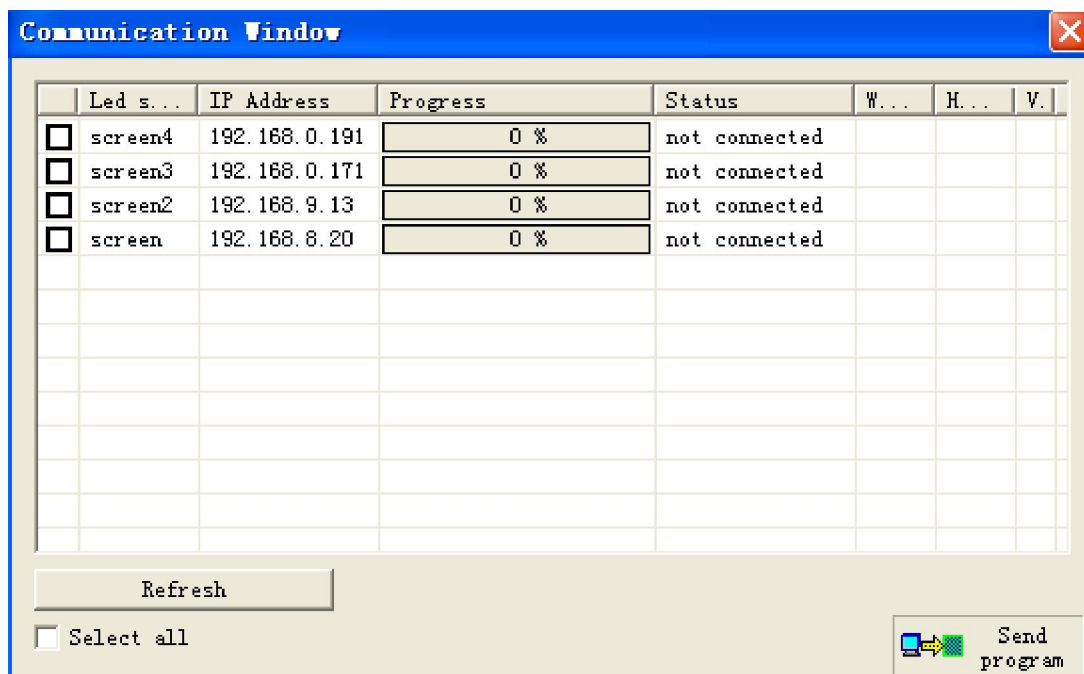


Figure 22-7

Note: there are some tips for Solution 2. Users should have some basic knowledge of communication and network, like relationship between IP and subnet mask, gateway and etc. If it is a wrong IP then LED screen could not display the program, in this case, please check if IP address of PC and control card, or subnet mask are all configured correctly.

Click “Start” in PC interface then a dialog box will pop up, as shown in image 22-8 in below:



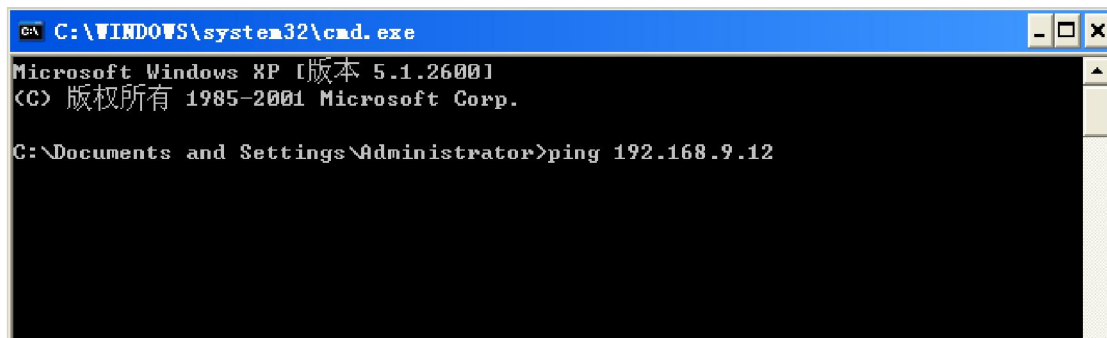
Figure 22-8

Then input “cmd” in dialog box, as shown in image 22-9 in below:



Figure 22-9

For example, Input “ping 192.168.9.12”after command prompt and press “enter” key, if the IP is correct then this picture will appear, as shown in image 22-10 in below:



```
C:\Documents and Settings\Administrator>ping 192.168.0.33

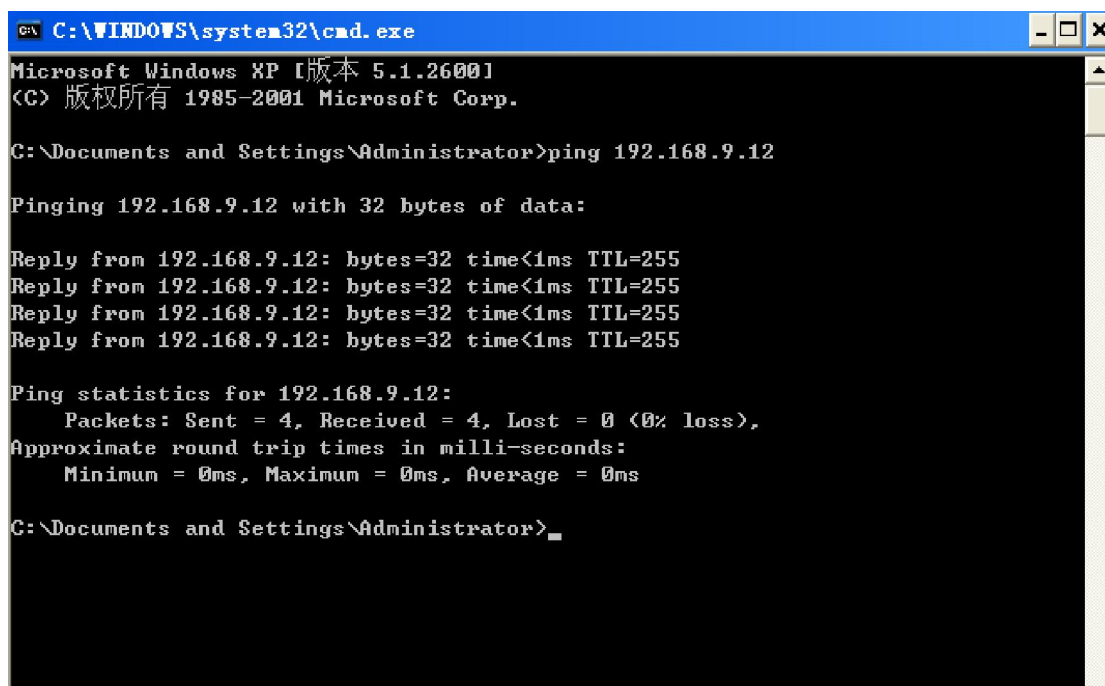
Pinging 192.168.0.33 with 32 bytes of data:

Reply from 192.168.0.33: bytes=32 time=2ms TTL=255
Reply from 192.168.0.33: bytes=32 time<1ms TTL=255
Reply from 192.168.0.33: bytes=32 time<1ms TTL=255
Reply from 192.168.0.33: bytes=32 time<1ms TTL=255

Ping statistics for 192.168.0.33:
    Packets: Sent = 4, Received = 4, Lost = 0 (0% loss),
Approximate round trip times in milli-seconds:
    Minimum = 0ms, Maximum = 2ms, Average = 0ms
```

Figure 22-10

If it is wrong then this picture will appear, as shown in image 22-11 in below:



```
C:\WINDOWS\system32\cmd.exe
Microsoft Windows XP [版本 5.1.2600]
(C) 版权所有 1985-2001 Microsoft Corp.

C:\Documents and Settings\Administrator>ping 192.168.9.12

Pinging 192.168.9.12 with 32 bytes of data:

Reply from 192.168.9.12: bytes=32 time<1ms TTL=255
Reply from 192.168.9.12: bytes=32 time<1ms TTL=255
Reply from 192.168.9.12: bytes=32 time<1ms TTL=255
Reply from 192.168.9.12: bytes=32 time<1ms TTL=255

Ping statistics for 192.168.9.12:
    Packets: Sent = 4, Received = 4, Lost = 0 (0% loss),
Approximate round trip times in milli-seconds:
    Minimum = 0ms, Maximum = 0ms, Average = 0ms

C:\Documents and Settings\Administrator>
```

Figure 22-11

If the IP address is correct but LED editor Software could not find controller, then please check if the computer firewall blocks the LEDeditor.exe or the router has closed the port from 31296 to 31299.

4. Recommended stand-alone mode due to only one screen in LAN

Click “Options” → Software Setup → Communication parameters → stand-alone mode, as shown in image 22-12 in below:

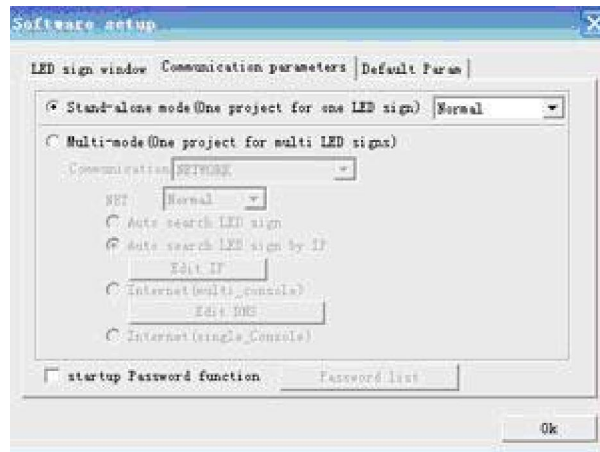


Figure 22-12

Please input screen's IP in the box of LED IP, as shown in image 22-13 in below:

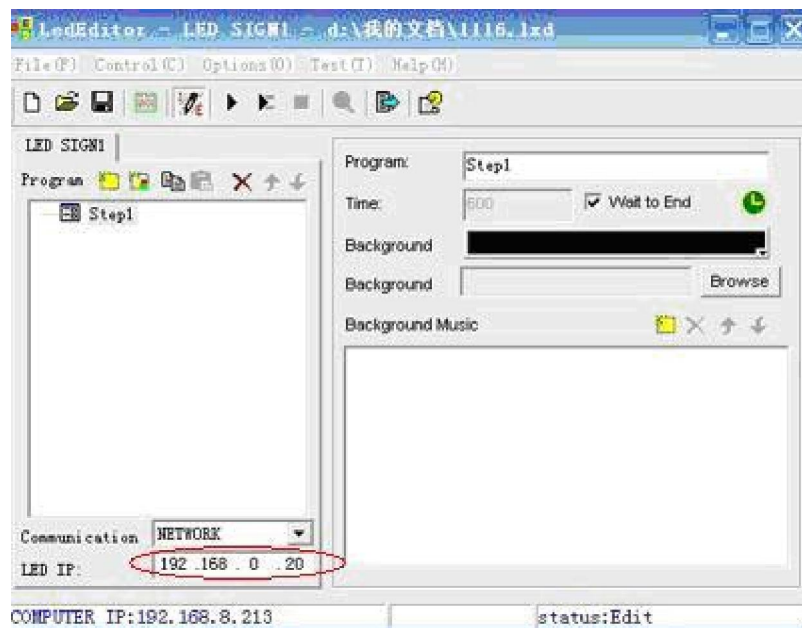


Figure 22-13

If PC and screen in different network segments then users should know screen's IP address in advance. But if PC and screen in the same segment then users can check screen IP by clicking on "Help" on Menuà Auto check LED screen IP. After this, input IP address in LED IP box. As shown in image 23-14 in below:

Check LED sign IP

Auto check LED sign Ip

Led sign name	IP Address
M10-A10-00277	192.168.9.12

Select control card in list, the IP address automatically will be copied to the IP address box

Ok

Cancel

Figure 23-14